

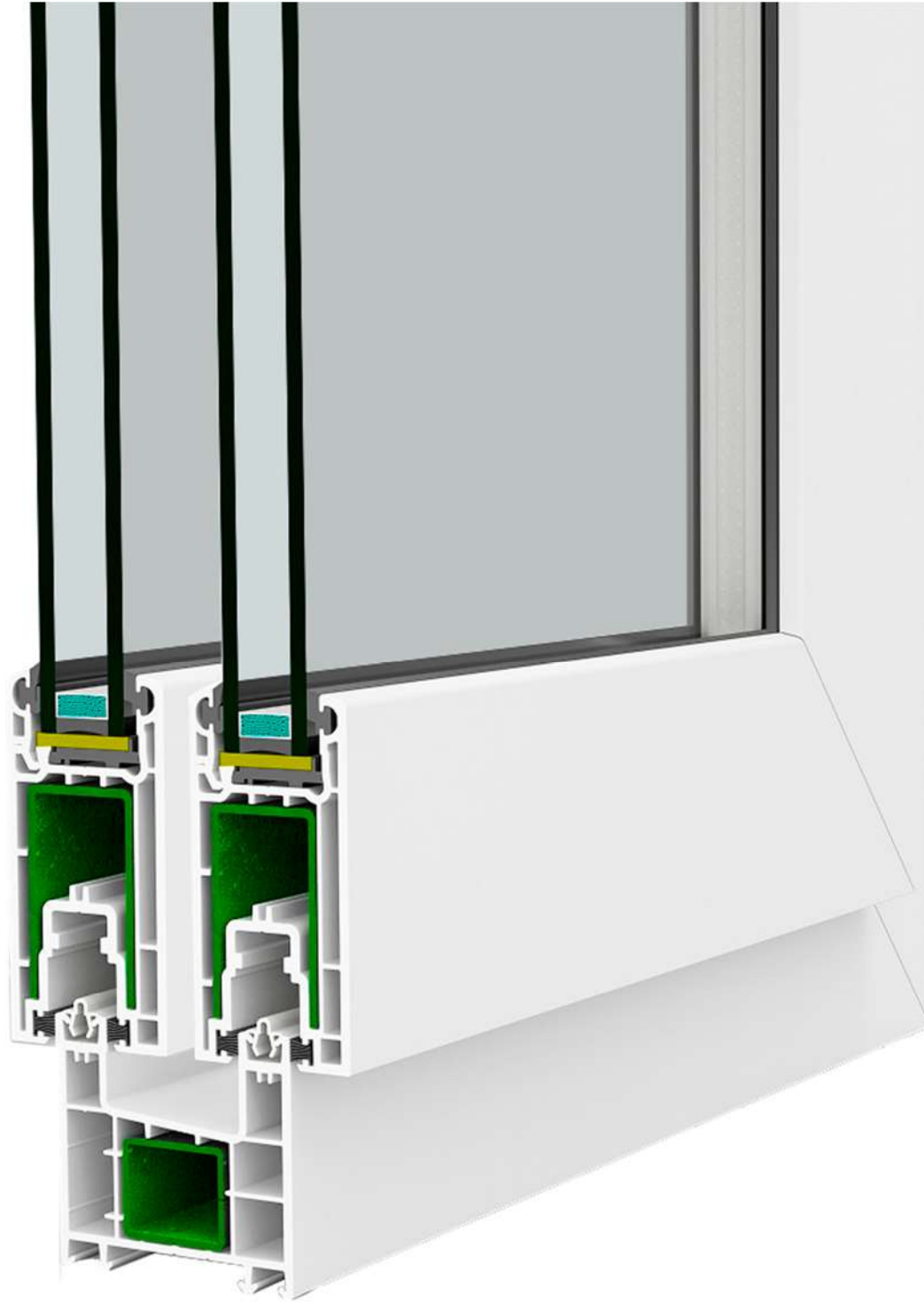


MAXIMA

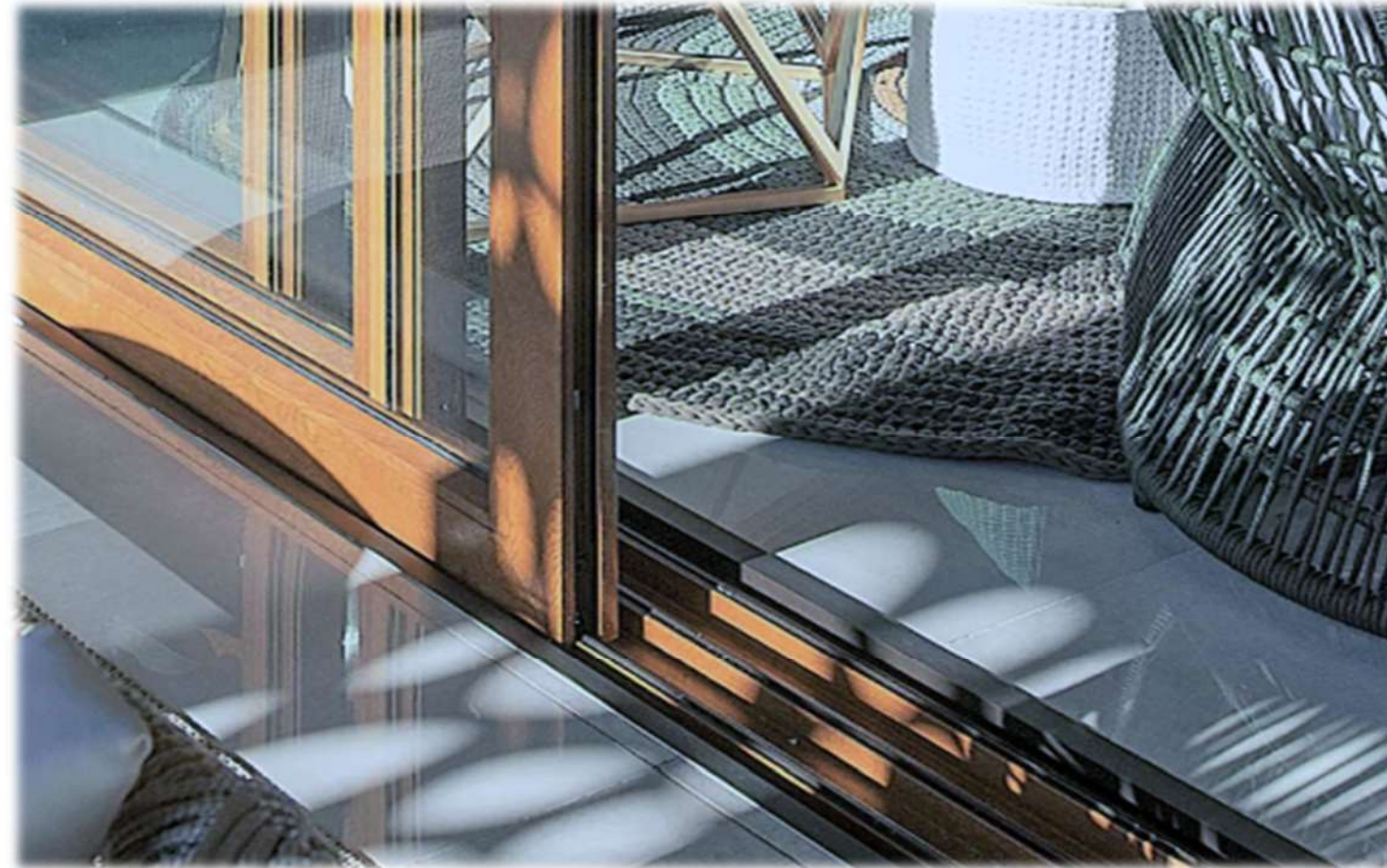
SOFT SLIDE

Product sheet

June 2025



MAXIMA VEKA SOFT SLIDE system is a sliding brush solution designed for closing terraces, loggias, or unheated spaces where perfect sealing is not required. With smooth opening and modern design, the system allows for interior space savings and the creation of an environment protected from wind, rain, or dust, without compromising brightness or the aesthetics of the facade.



- **MAXIMA VEKA SOFT SLIDE** system is designed for easy closures of terraces, loggias, and unheated spaces where brightness, natural ventilation, and space optimization are priorities.
- Targeted at projects where complete sealing is not required, MAXIMA SOFT SLIDE offers a practical and aesthetic sliding solution with smooth operation and minimal maintenance. Its discreet and adaptable design makes it suitable for residential complexes, shared spaces, or individual balconies.
- It is an efficient and affordable choice for partial protection against wind, rain, or dust, without compromising access, natural light, or the facade's appearance.



- Real estate developers seeking an affordable and aesthetic solution for balconies, terraces, or open loggias.
- Builders and architects from Mediterranean or southern regions, where brightness, natural ventilation, and freedom of movement are priorities.
- End users looking to create a semi-protected space without costly structural interventions, ideal for relaxation or storage.
- Urban renovation projects or vacation complexes, where sliding openings allow for space maximization and ease of use.
- Residential and commercial projects in areas with warm or mild climates, where complete sealing against air and temperature is not required.

01



Protection against the elements

Protects against UV rays, wind, dust, and rain

03



Low cost

Ideal solution for covering greenhouses and terraces

02



Space optimization

Sliding system that does not take up space when opened

04



Optimal ventilation

Equipped with hardware that allows locking in different opening positions

05

**Clean, modern design**

Suitable for those seeking a modern and refined design

07

**Suitable solution for sunny areas**

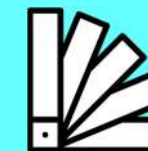
Limited thermal insulation properties
Ideal for enclosed terraces

06

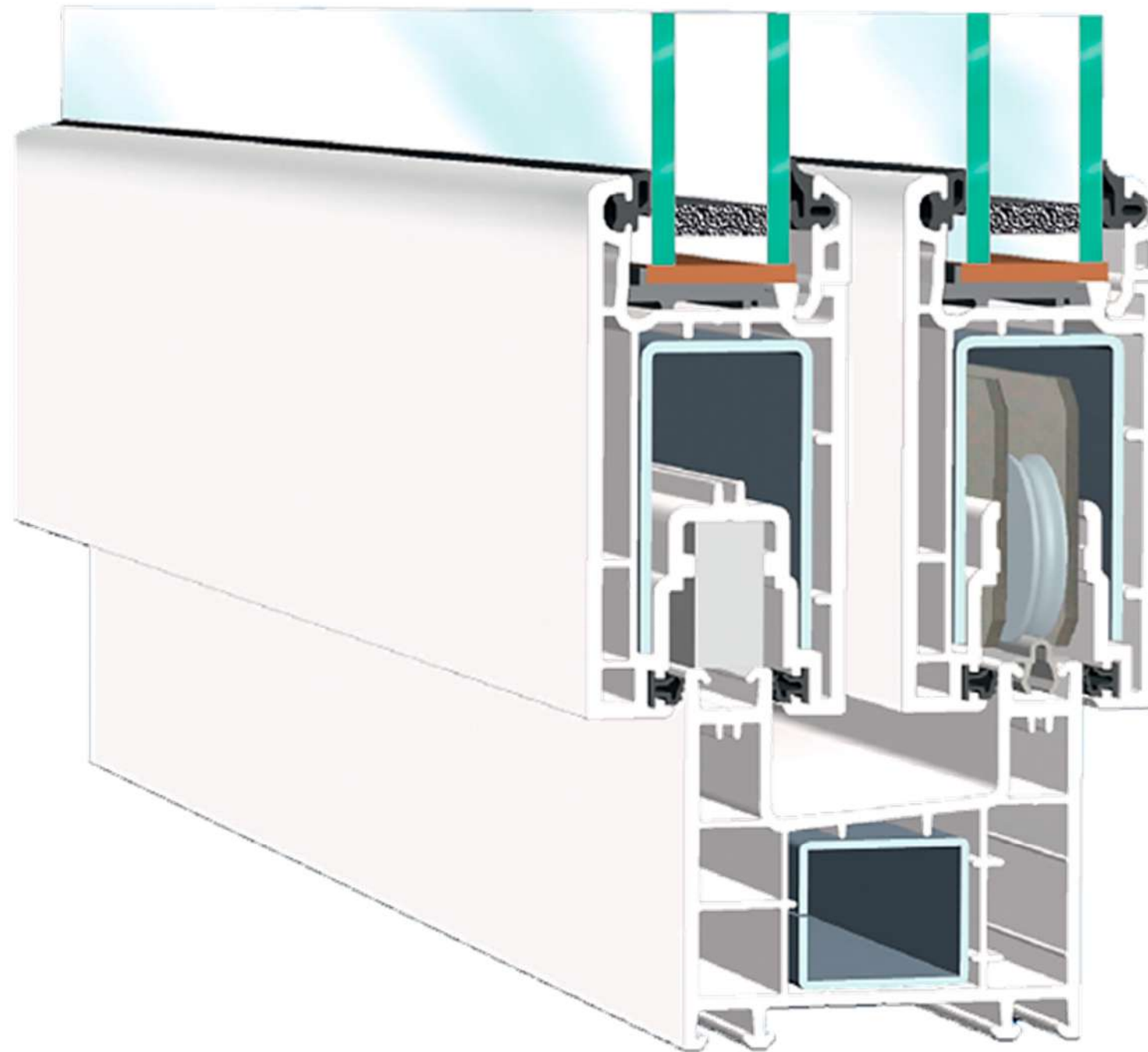
**Ease of operation and maintenance**

Easy to handle.
Minimal maintenance

08

**Aesthetic customization**

They can be customized to reflect individual preferences, personal style, or the desired visual identity.



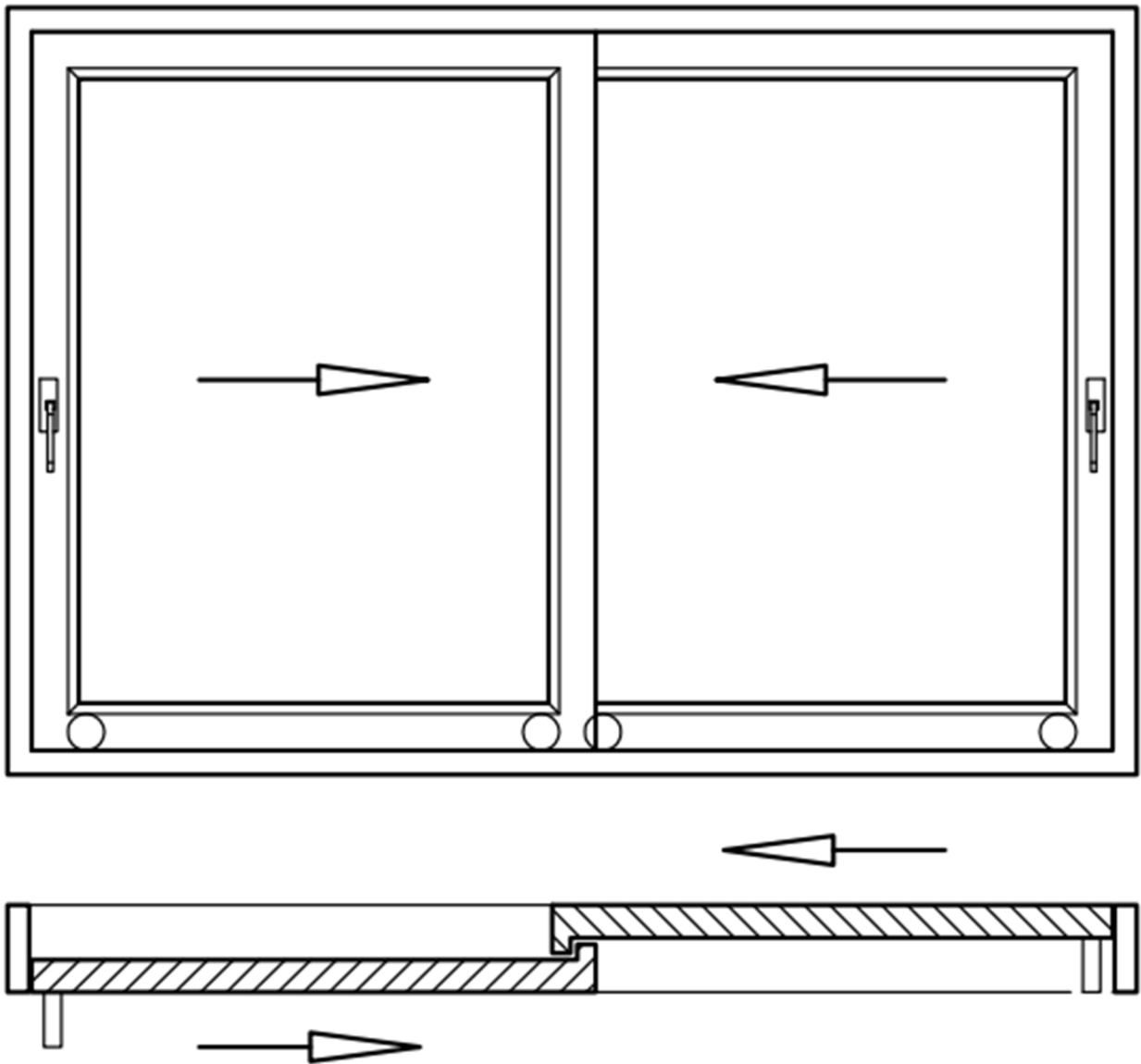


Description and technical characteristics

Product Name	MAXIMA VEKA SOFT SLIDE
Brand Profile	VEKA
Range	ECOSOL
Profile class (EN 12608-1)	Class A
Frame Build Depth	70 mm
Heat Transfer Coefficient Uf	up to 2.4 W/m²K
Heat Transfer Coefficient Uw	up to 1.6 W/m²K
Glazing Options	24 mm
Durability	Recyclable system, contributing to the conservation of resources

APPENDIX D

Maximum dimensions for Schema D



Characteristic	Diagram D
Maximum Frame Width	2.60 m
Maximum Frame Height	2.20 m



Hardware Kits for MAXIMA VEKA SOFT SLIDE

No.	ROTO Supplier / Type of system	Handle Configuration	Key features
1	< 120kg internal handle	Interior handle	<p>The weight of the sash must not exceed 120 kg.</p> <p>Handle only inside</p>
2	Weight < 120 kg int. handle/shell ext.	Inner handle / outer shell	<p>The weight of the sash must not exceed 120 kg.</p> <p>Inner handle and outer shell.</p>
3	Weight < 120 kg with PZ handle indoor/outdoor.	Indoor/outdoor handle with lock	<p>The weight of the sash must not exceed 120 kg.</p> <p>Interior and exterior handle with lock.</p>